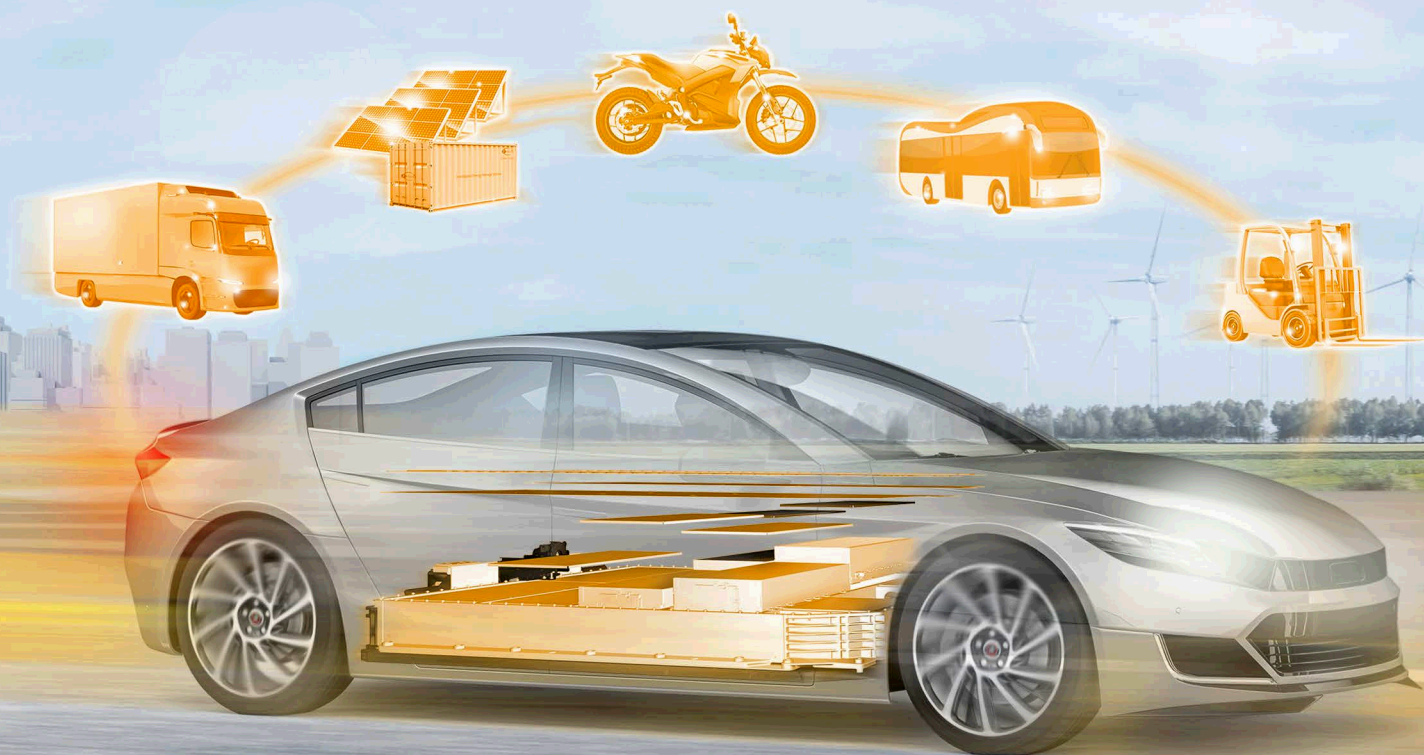


Thinking
batteries further



Product Overview



Discover Optimal Battery Performance

Battery performance is always a balancing act. Different applications in different sectors such as transportation, industrial and non-road mobile machinery as well as energy storage require different solutions. We enable optimal performance, whether your application calls for a focus on high energy density and long range, fast charging, long life cycle or ruggedness.

Our cells address key market needs with its range of chemistries and multiple form-factors. We also offer tailor-made configurations throughout our portfolio – from cells to modules and packs – to meet your individual requirements. Discover our portfolio and contact us to find the optimal battery solution for your application.



Extensive Production Capacities

We have the flexibility and innovative mindset of a start-up with the distinct advantage of also having the necessary production capacities to meet the demands of leading vehicle manufacturers as well as of other industries. There are currently two state-of-the-art production facilities in Ganzhou and Zhenjiang, China, with further production facilities being built by 2025, thereby increasing total planned capacity to 180 GWh/a.

In Europe, there is a production facility as a joint venture with Togg in Gemlik, Turkey, under the name Siro. Siro will develop the energy storage solutions for Farasis Energy Europe in the future and already produces modules and packs. Thanks to a well-established and reliable global supply chain, we can ensure just-in-time as well as just-in-sequence deliveries.

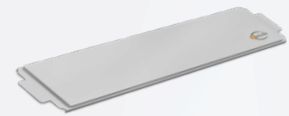
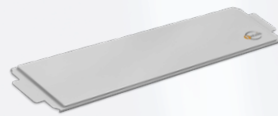
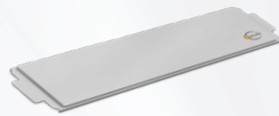
Cells



Product Name	P32	P53	P55
Chemistry (cathode)	NCM 6 Series	NCM 6 Series	NCM 6 Series
Chemistry (anode)	Graphite	Graphite	Graphite
Dimensions (mm)	161 x 231 x 6.05	161 x 231 x 10	316 x 103 x 10.6
Weight (g)	498 ±15	800 ±15	758 ±15
C/3 Capacity @25°C (Ah)	33.3	55.5	57.3
C/3 Energy Density @25°C (Wh/kg)	249	258	283
Voltage Range (Vdc)	2.75 – 4.3	2.75 – 4.3	2.75 – 4.4
10% to 80% Recommended Charge Time (min)*	30 – 35	30 – 35	30 – 35
Status	Production	Production	Production

Optimum Performance

*Charging capability depends on multiple factors such as system limit, temperatures, cooling strategy etc.



P58	P73	P75 (3-side sealing)	P84
NCM 6 Series	NCM 8 Series	NCM 8 Series	NCM 9 Series
Graphite	Graphite	Graphite	Si-Graphite
161 x 231 x 10	294 x 104 x 14.2	542 x 102 x 8.2	294 x 104 x 13.9
833 ±15	952 ±15	1030 ±15	960 ±15
60.5	73	74.9	84
275	280	267	315
2.75 – 4.35	2.75 – 4.2	2.8 – 4.2	2.5 – 4.20
30 – 35	30	18	25
Production	Production	Production	Development
	Ultra High Performance		

Values provided are recommended only. Non-system version can be quicker.

Please contact us at info@farasis.com if you have any further requests.

Modules For **Non-Automotive** Applications

Modules



14s2p Configuration

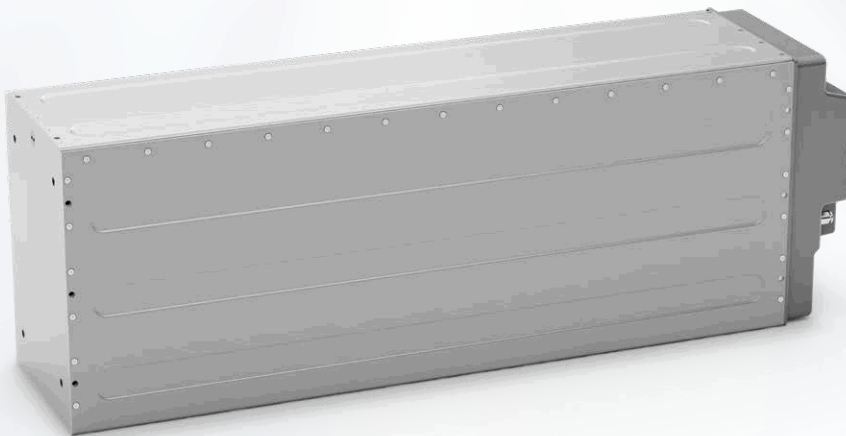
Variant 1:

- + 3.5 kWh
- + Max. system voltage: 60 Vdc
- + 168 x 248 x 200 mm

28s1p Configuration

Variant 2:

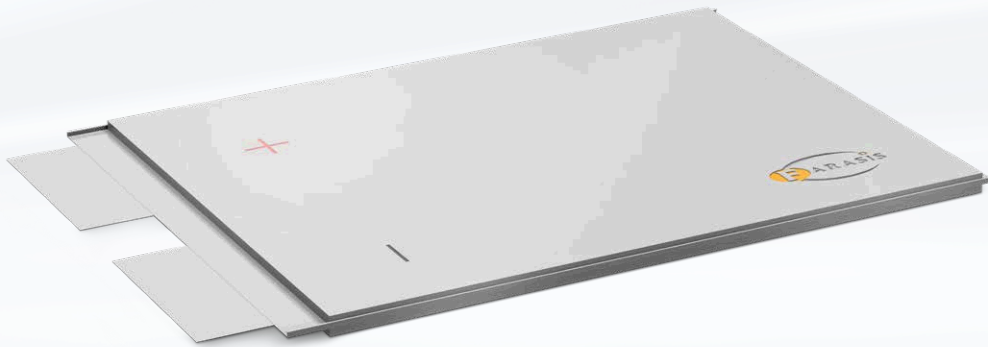
- + 3.5 kWh
- + Max. system voltage: 120 Vdc
- + 168 x 248 x 200 mm



14s6p Configuration

- + 10.4 kWh
- + Max. system voltage: 800 Vdc
- + 176 x 256 x 672 mm

Cell



P32

- + Chemistry (cathode): NCM 6 series
- + Chemistry (anode): Graphite
- + 161 x 231 x 6.05
- + C/3 capacity @25°C (Ah): 33.3
- + C/3 energy density @25°C (Wh/kg): 249
- + Voltage range (Vdc): 2.75 – 4.3
- + 10% to 80% recommended charge time (min): 30 – 35

**Please contact us at info@farasis.com
if you have any further requests.**

Industrial Strength - But Cleaner And Quieter





Our highly ruggedized solutions for electric industrial machinery deliver the power you need without any noise or fumes. They ensure a smooth workflow and efficient throughput indoors as well as outdoors. All of our solutions can be adapted to your needs.

Modules For **Automotive** Applications

Modules



6s3p Configuration

- + 4.8 kWh
- + Max. system voltage: 450 Vdc
- + 355 x 108 x 331 mm



12s2p Configuration

- + 6.4 kWh
- + Max. system voltage: 450 Vdc
- + 355 x 108 x 430 mm



12s3p Configuration

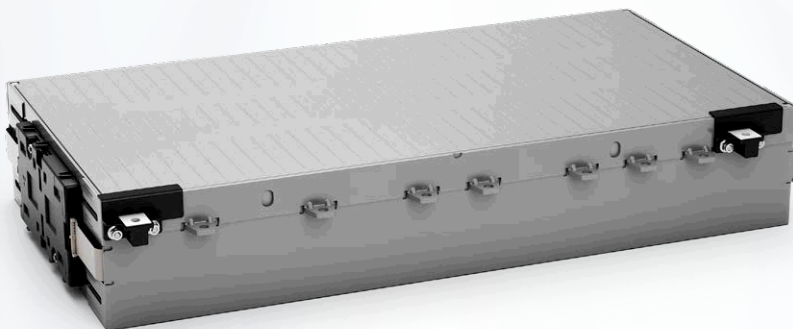
Variant 1:

- + 9.7 kWh
- + Max. system voltage: 450 Vdc
- + 355 x 108 x 626 mm

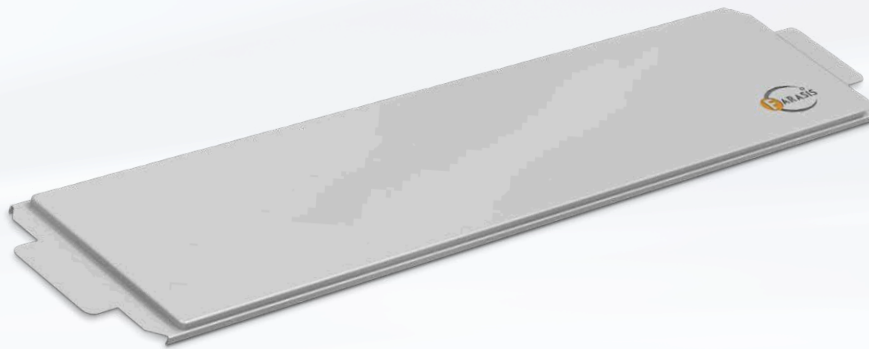
18s2p Configuration

Variant 2:

- + 9.7 kWh
- + Max. system voltage: 450 Vdc
- + 355 x 108 x 626 mm



Cell



P73

- + Chemistry (cathode): NCM 8 series
- + Chemistry (anode): Graphite
- + 294 x 104 x 14.2 mm
- + C/3 capacity @25°C (Ah): 74.1
- + C/3 energy density @25°C (Wh/kg): 285
- + Voltage range (Vdc): 2.75 – 4.2
- + 10% to 80% recommended charge time (min): 30 – 35

**Please contact us at info@farasis.com
if you have any further requests.**

Modules For **Automotive** Applications

Modules



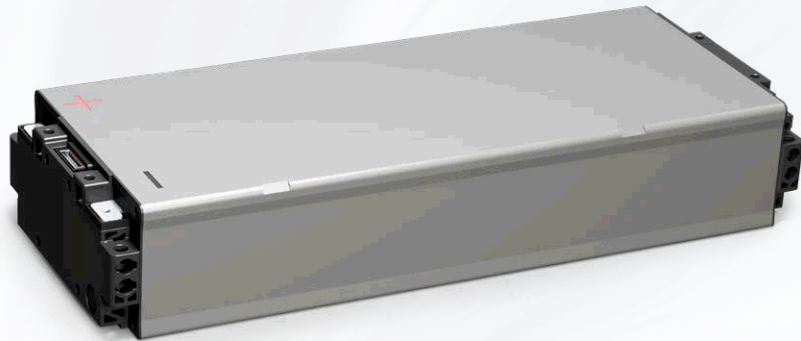
590 VDA Standard

Variant 1:

- + 12s2p configuration
- + 6.62 kWh
- + Max. system voltage: 800 Vdc
- + 225 x 108 x 590 mm

Variant 2:

- + 8s3p configuration
- + 6.62 kWh
- + Max. system voltage: 450 Vdc
- + 225 x 108 x 590 mm



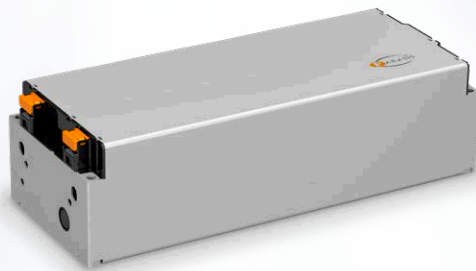
355 VDA Standard

Variant 1:

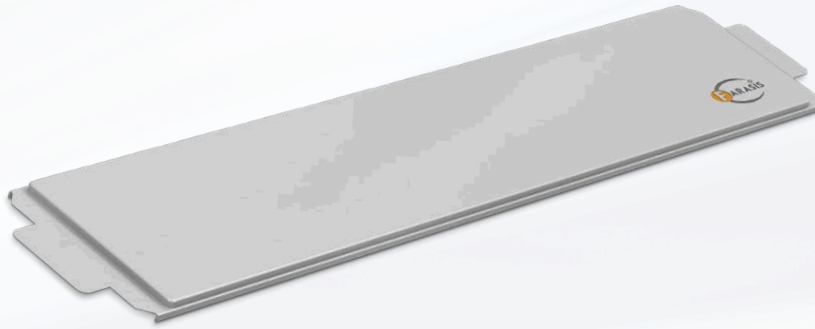
- + 6s2p configuration
- + 2.3 kWh
- + Max. system voltage: 450 Vdc
- + 152 x 108 x 355 mm

Variant 2:

- + 3s4p configuration
- + 2.3 kWh
- + Max. system voltage: 450 Vdc
- + 152 x 108 x 355 mm



Cells

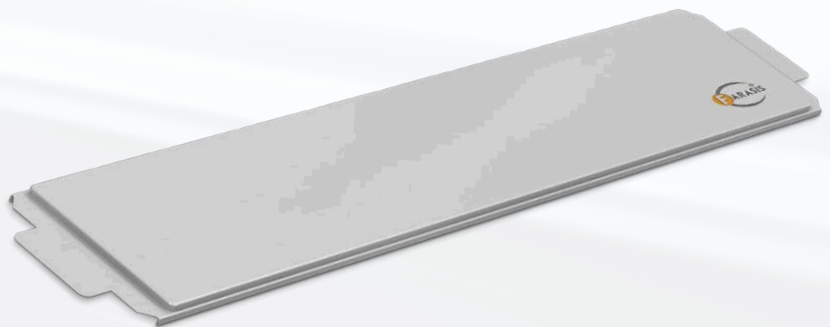


P75

- + Chemistry (cathode): NCM 8 series
- + Chemistry (anode): Graphite
- + 542 x 102 x 8.2 mm
- + C/3 capacity @25°C (Ah): 74.9
- + C/3 energy density @25°C (Wh/kg): 267
- + Voltage range (Vdc): 2.75 – 4.2
- + 10% to 80% recommended charge time (min): 18

P50 → P55

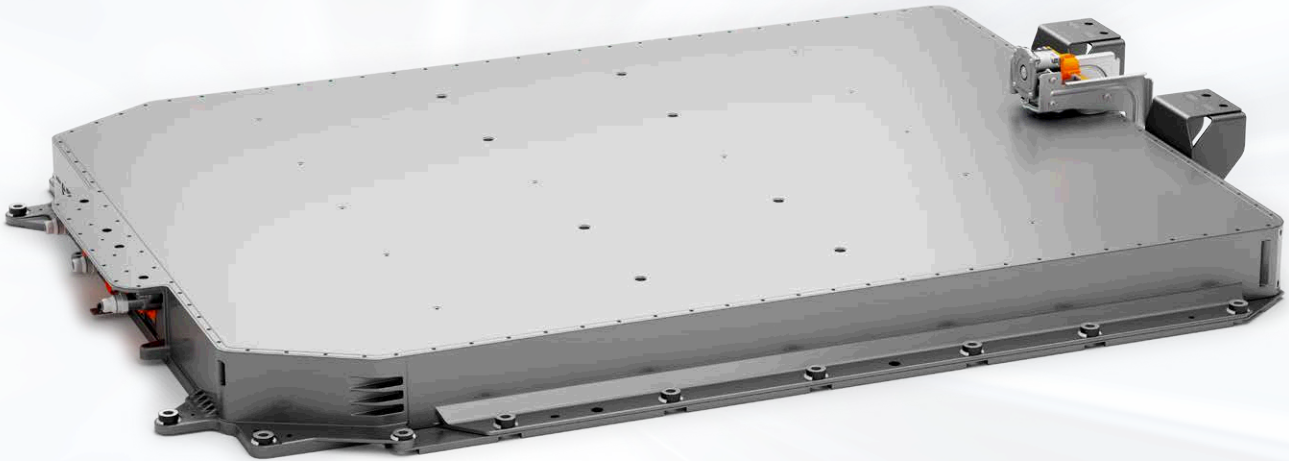
- + Chemistry (cathode): NCM 6 series
- + Chemistry (anode): Graphite
- + 316 x 103 x 10.6 mm
- + C/3 capacity @25°C (Ah): 52 → 55
- + C/3 energy density @25°C (Wh/kg): 260 → 283
- + Voltage range (Vdc): 2.75 – 4.3 → 2.75 – 4.4
- + 10% to 80% recommended charge time (min): 30 → 35



**Please contact us at info@farasis.com
if you have any further requests.**

Battery Pack

Our battery pack impresses with flat design for low profile underfloor or roof mounting and complies with ECE R100, R10, UN38.3 and ISO26262 standards. Packs can be mounted in parallel with external junction box. Superior safety performance goes without saying.



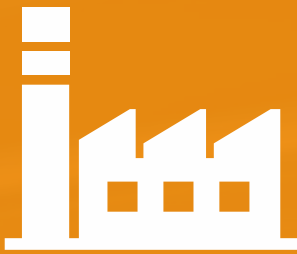
Farasis Battery Pack

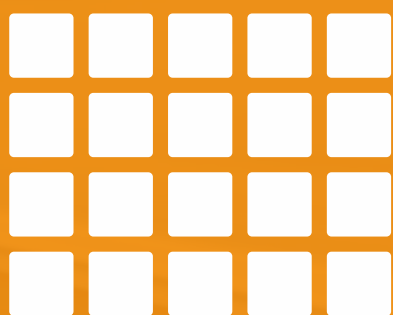
- + 51.2 kWh
- + > 2,500 cycles
- + 264 – 403.2 Vdc (96s2p)
- + 1990 x 1440 x 144 mm
- + NCM/Gr
- + ~ 520 kg
- + ~ 98,5 Wh/kg
- + ~ 190 Wh/l
- + Liquid cooling and heating

Please contact us at info@farasis.com
if you have any further requests.

Energizing Facts And Figures About Farasis

6
 R&D
centers

4
 production sites



180 GWh/a cell
production capacity
planned by 2025

100% 
carbon-neutral production

7,000+ 
employees worldwide

Thinking
batteries further



Performance Knows No Borders



Farasis Energy Europe GmbH
Benzstrasse 2
72636 Frickenhausen
Germany
+49 (0)7022 78944-0
info@farasis.com
www.farasis-energy.com